

From: **Spectral Matching in Time Domain: A Seismological and Engineering Analysis**

Bulletin of the Seismological Society of America. 2018;108(4):1972-1994. doi:10.1785/0120170396

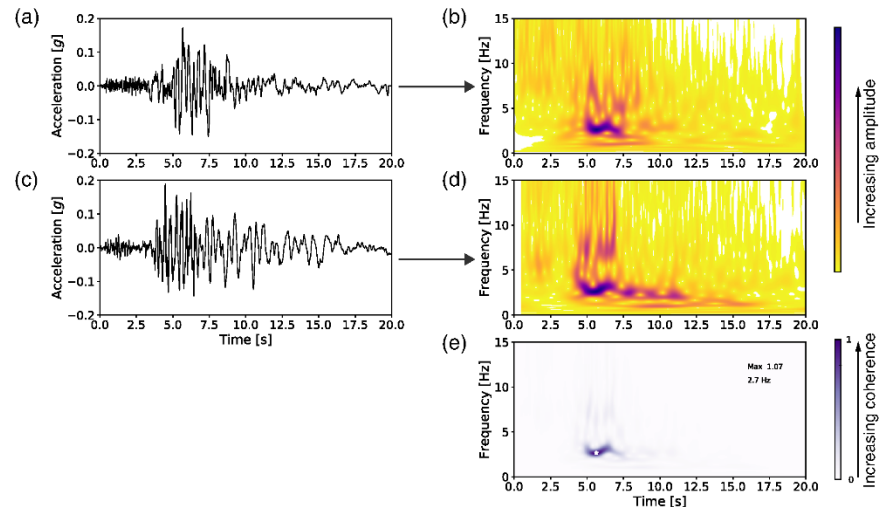


Figure Legend:

(a) Target accelerogram and (b) matched time history plotted along with their Stockwell (S)-transform (c and d, respectively). (e) The target and matched S-transforms coherence image as a function of frequency and time is represented using a sequential palette with boundaries varying from 0 (clear) to 1 (darker). The white star shows the time–frequency location at which the maximum value of coherence product occurs. The color version of this figure is available only in the electronic edition.