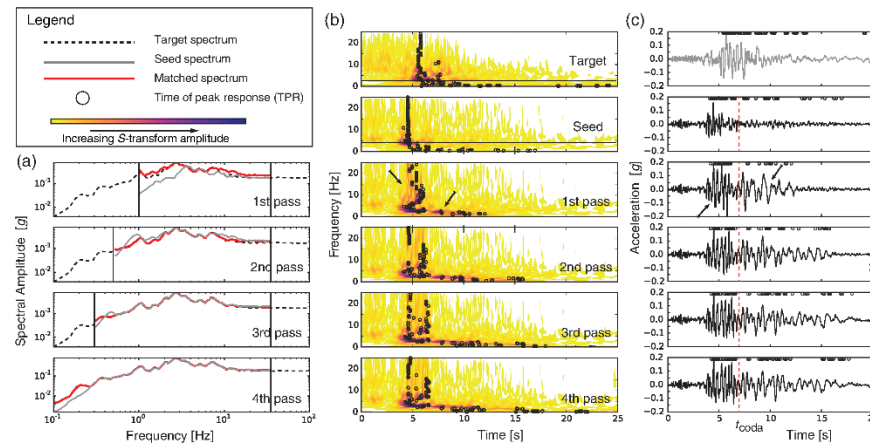


From: **Spectral Matching in Time Domain: A Seismological and Engineering Analysis**

Bulletin of the Seismological Society of America. 2018;108(4):1972-1994. doi:10.1785/0120170396



**Figure Legend:**

Time–frequency analysis of the RSPMatch matching process. (a) From top to bottom: the four passes of the spectral matching seen on the spectrum response with details on line types given in the legend. (b) Target and seed S-transform amplitude followed by the S-transform evolution of the four passes of the seed time history processed by the spectral matching software. Details on palette and markers are given in the legend. (c) Target and seed time histories followed by the intermediate time histories produced by the spectral matching software. The accelerogram after the fourth and last iteration is the one for which the spectrum successfully matches the target. The color version of this figure is available only in the electronic edition.