

From: **Spectral Matching in Time Domain: A Seismological and Engineering Analysis**

Bulletin of the Seismological Society of America. 2018;108(4):1972-1994. doi:10.1785/0120170396

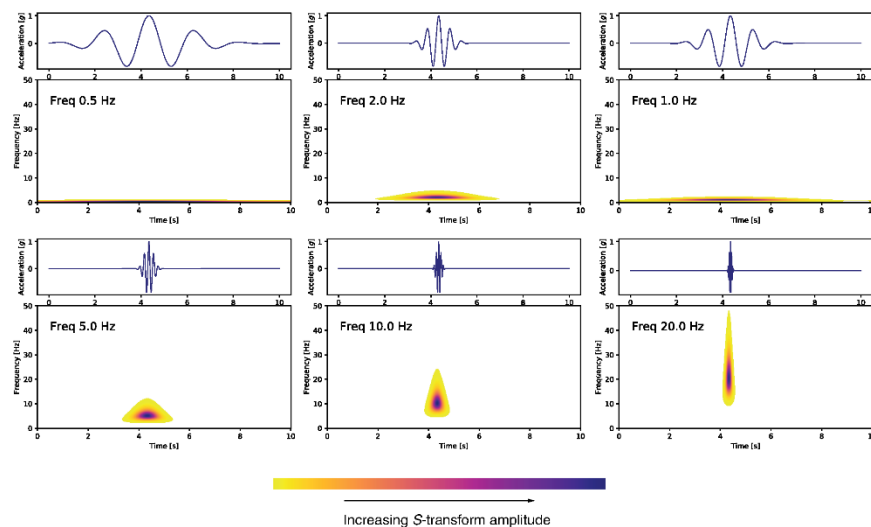


Figure Legend:

Cosine wavelets from 0.5 to 20 Hz with below their corresponding S-transforms. The color version of this figure is available only in the electronic edition.